



It's next to the...



It's between the ... and the...



It's opposite the...

Where is the...?

It's next to the...

It's between the... and the...

It's opposite the...

How to get to the...?

Go straight on.

Turn left.

Turn right.



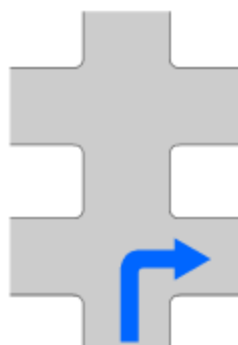
go left
turn left
take a left
take the second on the left
it's on your left



go right
turn right
take a right
take the first on the right
it's on your right



go ahead
go straight ahead
go straight on



the second

the first



Take the first right.

Take the second left.